

Ship Simulator 2008

The world's best Maritime Simulator has become even better!



Ship Simulator 2008 Userguide

Contents

Ship Simulator 2008 Userguide.....	2
Contents	2
General	3
Free Roaming.....	3
Viewpoint positions.....	4
Play Missions.....	5
Example mission	7
Information panel.....	9
Chart.....	10
Keyboard control	11
Mouse functions	12
Mission objectives	12
Options	12
Graphic settings.....	13
Controls	13
Sounds.....	14
Troubleshooting.....	14
Technical support	15
Epilepsy warning Notes	16
License Agreements.....	16
Credits	18

General

Ship Simulator 2008 has the following possibilities:

Free Roaming, where you can select a ship and an environment, set the weather and time, and start sailing. In this mode, there are no clear objectives and no ranks to be improved. Just go wherever you want with whichever ship you prefer. If you reach the end of an environment, you get the choice where you want to go to next. So you can start in Rotterdam, and end up in New York for example.

Play missions, whereby you have to reach certain goals without causing damage. Missions can be easy, with just one ship to control and just a few goals. They can also be complex, whereby you need to control multiple ships simultaneously, each with its own set of goals. There are even missions whereby you need to tow a large boat into a harbour, using multiple small tug boats. You can earn ranks by completing missions without causing damage. The more complex the mission, the more you add to your rankings.

Image 1 shows the user-interface screens that you should see if the game installs and functions correctly.

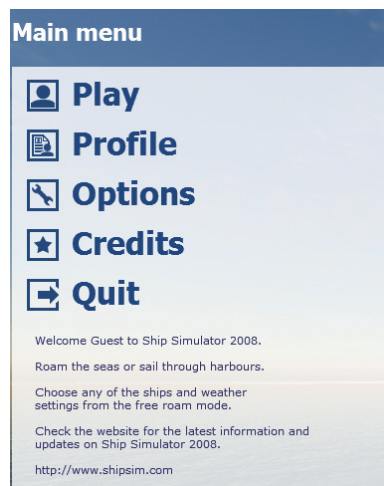


Image 1a. Main menu user-interface screen.

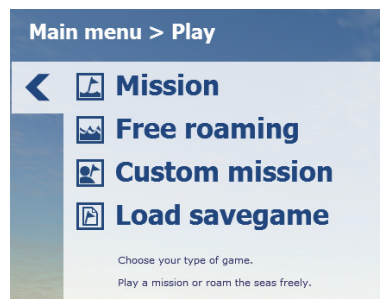


Image 1b. User-interface screen of Play menu.

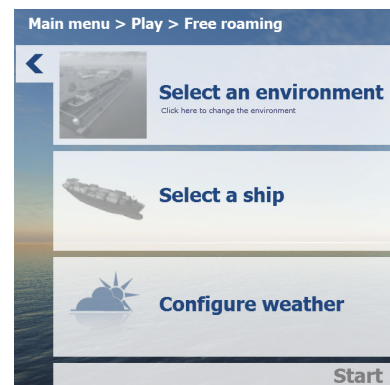


Image 1c. Free roaming screen.

Free Roaming

Click on Play, and then on Free Roaming. You should see the user-interface of image 1c. Select an environment by double-clicking on one name in the list, or clicking on the name and then on Select at the bottom. For example, San Francisco. Then select a ship, and choose one from the list of ships. For example, the select the first ship, container vessel Vermaas from the fictitious company ADF. Then set the weather and time parameters, or keep the default settings..

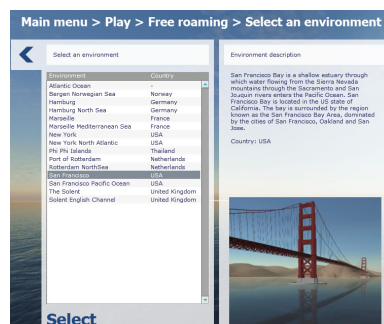


Image 2a. Free roaming, select an environment from the list.

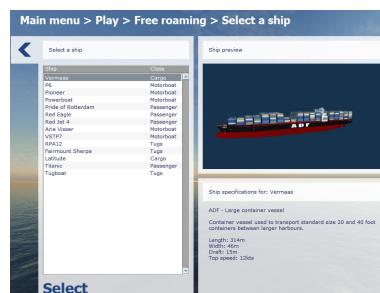


Image 2b. Then select a ship. Each ship in the game should be shown here, rotating around its centre.



Image 2c. Time and weather configuration options in free-roaming mode.

After selecting an environment, a ship, and adjusting the time and weather settings, click on Start. After some loading time, you should see something like image 3.



Image 3. In Free roaming, if you select the ship Vermaas in San Francisco, you should get something like this. The actual position could be different, as the ships in free-roam mode spawn randomly at different locations. You can zoom in and out of the chart with the slider on the right, and zoom further away from the ship with the mouse scroll wheel.

You can steer the ship and control the engines using either the arrow keys of your keyboard, or by click-dragging the mouse over the engine handles, the steering wheel and the bow thrusters. Clicking on the icons at the bottom of the screen shows or hides the different elements of the user-interface: the information panel at the top, the waypoints and player ships (in missions only), the chart, the mooring and towing options, the different viewpoint positions, the engine and steering controls, taking a snapshot, the ship log (in missions), the settings, and reset to the start position.

Viewpoint positions

The standard viewpoint is the **External viewpoint**, which by default floats in the air behind the ship. Using the mouse scroll wheel, you can zoom in and out of the ship. Pressing the right mouse button and dragging the mouse left and right will rotate the viewpoint around the ship.

There are two alternative viewpoint positions. One is the **helmsman viewpoint**, and the other is the **walkthrough viewpoint**. These are shown in image 4.



Image 4a. External viewpoint, which allows you to rotate around the ship you are steering.



Image 4b. Steering wheel viewpoint, which puts you at the helmsman position.

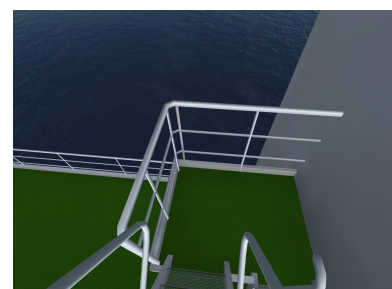


Image 4c. Walkthrough mode, which allows you to fully explore the ship.

At any point you can show or hide the user-interface overlay with the Tab key. Hiding it is probably more appropriate for the steering wheel viewpoint and the walkthrough viewpoint.

In the steering wheel mode and the walkthrough mode, with a hidden overlay user interface, you can still steer the ship and control the engine handles directly, using the mouse pointer over the objects on the bridge.

In walkthrough mode, you can “walk” using the cursor keys and the mouse. Just like in the other modes, pressing the right-hand mouse button and moving the mouse will change the looking and moving direction. While walking forward, pressing the Shift key will let you “run” faster.

Play Missions

Start mission “Assist the yacht with defect engines”. You will see image 5. Numbers are added to explain the different elements of the user-interface.

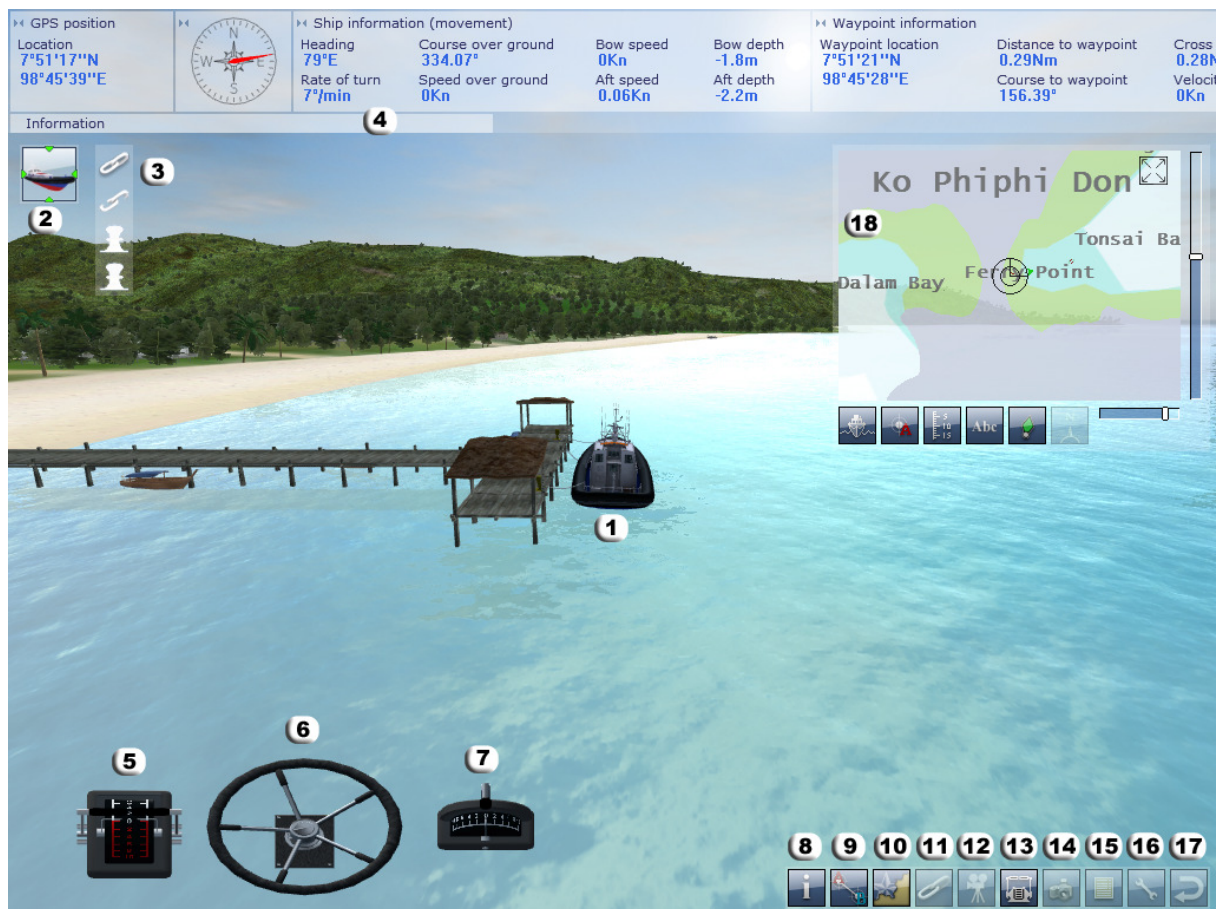


Image 5. Start of mission “Assist the yacht with defect engines”.

1. Active player ship. Zoom closer to the ship with the mouse scroll wheel. Turn around the ship by pressing the right-side mouse button and dragging the mouse left and right, or up and down.
2. Icon for the active player ship. There are missions with multiple player ships. Each ship will have an icon like this, and you can change between ships by clicking on these icons.
3. The mission objectives, or Waypoints, of the player ship. Moving the mouse over these icons will bring up a text display with the waypoint’s objectives. Some waypoints don’t have textual objectives, but they just indicate where to go to next on the chart. There are also waypoints for mooring, towing, disconnecting towing ropes, and rescuing drowning people.
4. Information panel. Can be switched on or off with button number 8 of image 5, or with F2.

5. Engine controls. Click on the handles and drag the mouse up and down to set the amount of gas. Click-dragging in the area between the two handles will control both of them simultaneously. Double-click in the middle to bring them to neutral position. The engines can also be controlled with the cursor keys up and down.
6. Steering wheel. Click-dragging on it and turning the mouse in a circle will steer the ship. Double-click in the middle to bring it back to the neutral position. The ship can also be steered with the cursor keys left and right.
7. Bow thrusters. Only usable for ships that actually have bow thrusters. Click-dragging left and right on it will push the bow of the ship in that direction. This only works for slow sailing speeds, less than 3 knots. Handy for mooring or unmooring in tight places.
8. Show/hide the information panel at the top of the screen. Also possible with F2.
9. Show/hide the player ship and waypoint icons (3 and 4) at the top-left. Also possible with F3.
10. Show/hide the chart. Also possible with F4.
11. Show/hide the mooring, towing and anchoring spots as little coloured spheres on the ships and mooring points. If you click first on such a sphere on the ship, and then on a second sphere on another ship or mooring boulder, a rope will be created between the two points. The rope will come up with little red crosses. Clicking on such a red cross will take away the rope again. Also possible with F5.
12. Show/hide viewpoint icons. Standard is the external viewpoint (key 1), which hangs behind the ship. Other options are the steering-wheel viewpoint (key 2) and the walkthrough viewpoint (key 3). Reset the viewpoint positions with the 0 key. Show/hide viewpoint icons with F6.
13. Show/hide the engine and steering controls.
14. Take a picture, which will be saved in C:\Program Files\Vstep\ShipSim2008\Pictures\. Also possible with F7.
15. Mission log. This shows you the times that you reached the waypoints of your mission. Also possible with F8.
16. Settings. This allows you to change the settings for sound volume, graphics quality and controls. More on mapping keys or joysticks to game functions later. Also possible with F9.
17. Reset mission to the start situation. Also possible with key r.

Clicking on the Moorage icon at the bottom, or F5, will display three icons: MooringLine, TowLine, and Anchor. These are shown in image 6.



Figure 6a. Mooring lines. Connection points are shown as orange spheres.



Figure 6b. Towline connection points are visible as green spheres.



Figure 6c. Anchor points are shown with a blue sphere at the bow.

Clicking on the MooringLine icon will show orange spheres on the possible mooring connection points. The TowLine icon will show green spheres on the towing connection, if the ship has these. The

Anchor will show a blue sphere at the front of the ship. Clicking on it will drop the anchor, which can be dangerous when you do this at full speed! Whenever a mooring, towing, or anchor line is created, red crosses are displayed. Clicking on these will remove the rope again

Example mission

In the following image sequence, we will show you how to complete the mission objectives, called Waypoints, of this mission. A video tutorial of this mission is also available. It was installed with the game and can be watched with Start – Ship Simulator 2008 – Tutorial mission.



Image 7. Click on the Moorage icon at the bottom, and then on the red crosses to disconnect the mooring lines.



Image 8. Now the boat is loose and ready to go. Click-drag the mouse on the engine and steering controls at the bottom-left, or use the cursor keys.



Image 9. Steer the ship to the yacht floating around with a broken engine. You can follow your ship's position on the electronic chart. The defect yacht, your Waypoint, is indicated on the chart and on the water with a green circle.



Image 10. Steer the ship inside the green circle, turn around, and make the ship stop by reversing the engines.



Image 11. Click again on the Moorage icon at the bottom, then on the Towline icon. Green dots will appear on the front and back of the ship, indicating the connection points. Now click on one of the green dots, then on the orange dot on the yacht's front. Now your towing rope is connected.



Image 12. Red crosses appear at both ends of the towing line. Clicking on these will disconnect the rope again.



Image 13. Now you can start towing the yacht to the next waypoint area, close to the beach.



Image 14. Keep track of the chart. The little green arrow on the edge of the circle indicates the direction you need to go to the next waypoint.

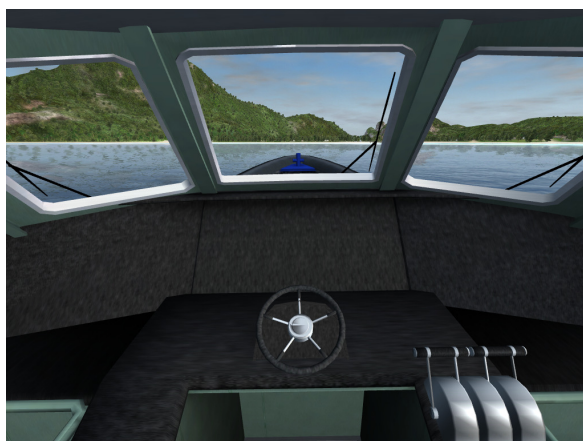


Image 15. You can take the seat behind the steering wheel using keyboard key 2, or clicking on the steering wheel icon that pops up when you click on the Viewpoint icon at the bottom. Hide the overlay user-interface with the Tab key. Look around with right-mouse click-drag left and right. Use the steering wheel and engine controls with the left mouse. Click-drag the



Image 16. If you come close to the next waypoint, you see a green circle on top of the water. Moving the mouse over the waypoint icon at the top-left pops up the objective. So here the objective is to disconnect the towing rope when you are inside the waypoint circle.

mouse on top of these elements in the desired direction.



Image 17. Click again on the Moorage icon. When you are inside the green circle, click on the red cross to disconnect the towing rope.



Image 18. Waypoint achieved. The green circle will disappear and the waypoint icon at the top-left will become green.



Image 19. Next waypoints are to moor the ship again at its original location. Sail to the green circle, click on the mooring icon. Then click on an orange dot on the ship and next on the orange dot on the mooring boulder. A mooring line is created and the waypoint is achieved.

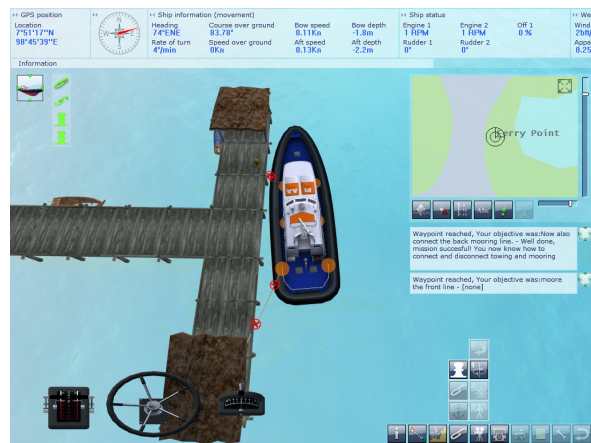


Image 20. Also connect the second mooring line the same way. Mission successful!

Information panel

GPS position Location 51°29'14"N 81°49'54"E	Ship information (movement) Heading 80°E Course over ground 271.70° Rate of turn -1°/min Speed over ground 0Kn	Bow speed 0.03Kn Bow depth -1.1m Aft speed -0.12Kn Aft depth -1.3m	Waypoint information Waypoint location 51°46'36"N 81°50'14"E Distance to waypoint 0.37Nm Course to waypoint 103.04°
Ship status Engine 1 0 RPM Rudder 1 0°	Engine 2 0 RPM Rudder 2 0°	Weather Wind 0bft/N Apparent wind 0Kn/S	Time/Date Time 06:40:54 Date 01/01/07

Image 21. Information panel. Using the bar at the bottom, you can shift left and right.

- GPS position, Location – geographical coordinates of ship position.
- Heading – The course you are steering on the compass.
- Rate of Turn – Indication of how fast the ship is turning, in degrees per minute.
- Course Over Ground - This is the course that the ship actually moved over the last few seconds. Note that this course may be different than the Heading, because of drift.

- Speed over Ground – Speed in knots, or nautical miles per hour, that the ship moved between fixed positions. Note that this speed may be different than the speed gauge on the ship, which is usually based on speed through the water, because of drift or current. 1 knot = 1.852 km/hour.
- Bow speed – This is important when mooring large vessels. It indicates the speed that the bow of the ship is moving sideways, for example when the bow thrusters is used. Too much bow speed towards the quay could damage the bow of a container vessel, for example.
- Aft speed – same story for the back end of the ship.
- Bow depth – Water depth in meters below the sea level at the bow of the ship.
- Aft depth - Water depth at the stern of the ship.
- Waypoint location – geographical coordinates of the position of the next waypoint.
- Distance to waypoint – in Nautical miles. 1 Nm = 1.852 km.
- Course to waypoint - Compass course to the next waypoint in degrees.
- Cross track error – Distance you are located from the direct line between the previous and next waypoint, in Nautical miles. 1 Nm = 1.852 km.
- Velocity made good – Component of the speed towards the next waypoint.
- Engine 1 – Thrust of engine 1 in rotations per minute (rpm)
- Engine 2 – Thrust of engine 2 in rotations per minute (rpm)
- Thruster 1 – Only for ships that have a bow thrusters, usually the larger ships. Thrust of the bow thrusters in % of total thrust. Bow thruster is a sideways propeller located at the bow of some ships. It only works at slow movement speeds, the lower the better. It is normally used for manoeuvring in small spaces, like mooring and unmooring in harbours.
- Damage – In case of collisions, the damage is given here as a percentage. The ship will move slower when it has damage. In case of damage below the waterline, it will slowly start to sink.
- Wind – True wind speed in Beaufort, and compass direction.
- Apparent wind – This is a combination of the true wind and the wind you feel because of the speed of the vessel.

Chart

In the below image, an explanation is given of the elements of the electronic sea chart.

Image 22. Chart. Explanation of the numbered items:

1. Switch ship icons on/off
2. Switch waypoints on/off
3. Switch water depths on/off
4. Switch names on/off
5. Switch buoy icons on/off
6. Choose to display the chart North-up, or oriented in the player ship heading.
7. Slider to set the transparency of the chart
8. Slider to set the zoom level
9. Switch between small chart window and full-screen
10. Player ship position and direction
11. Direction of the next waypoint
12. Location of next waypoint



The chart has the option to orientate itself around the player ship direction, similar to car navigation

systems, whereby the chart rotates around the car which stays fixed in the centre. Radars also usually function that way. Normally, sea charts are orientated North-South, or North-up, and the player ship icon orientates itself according to its compass heading.

A blue color on the chart indicates a shallow area. At what depth exactly the charts becomes white is different per environment, like on the commercial sea charts of those areas. On some charts this is 10 meter, on some others 20 m.

Grey or yellow areas indicate landmass, white or blue indicates water. Numbers indicate water depth, in meters.

The centre of the chart window indicates the position of the current player ship. The straight line shows the ship movement or orientation direction. In missions with multiple player ships, clicking on another ship icon at the top will show that ship's position centred on the chart. The little green triangle indicates the direction to the next waypoint.

Waypoints are indicated on the chart with little red and green circles. The next waypoint on the list is indicated with two circles, one red and one green. Completed waypoints are indicated with a green check mark (not shown in this image as no waypoint was completed yet).

Other ship, both moving ships and moored ships, are visible with ship-shaped images. Blue images indicate moving ships, and black images indicate moored ships. So in effect, the chart also has a radar function, especially useful in foggy conditions.

Keyboard control

Apart from steering with the mouse using the overlay steering and engine controls, you can also steer a ship with the keyboard.

Key	Function
Tab	Shows or hides all the interface elements.
1,2,3	Switch between external view, helmsman view and walkthrough mode
4,5	Other cameras rotating the ships that function in combination with the mouse
0	Reset viewpoint
P	Pause
R	Reset mission
Cursor keys up/down	More/less throttle on the engine controls (both engine simultaneously). With the smaller ships, the engine control returns back to neutral automatically. With the larger ships, the engine control stays in position until you "push" it back with the mouse or the keys.
Cursor keys left/right	Steer left or right. With the smaller ships, the steering returns back to neutral automatically. With the larger ships, the steering stays in position until you steer back with the mouse or the keys.

Cursor key plus Shift key	To set the engine throttle or the rudders in a fixed position, instead of letting them get back to neutral position when you let go of the cursor keys, you can use the Shift key in combination with the cursor keys.
,	Bow thrusters steering port (left)
.	Bow thrusters starboard (right)
+	Zoom into the chart
-	Zoom out of the chart
H	Horn
F2 – F9	Each F key shows or hides one of the user-interface elements
F7	Take picture

Mouse functions

Button	Function
Left	<p>Click on an active object in the scene, or on a top-row icon, (player ship or waypoint) centers the viewpoint on that object.</p> <p>Click-dragging the left mouse button on the engine controls will move the handle forward and backward. Doing this between the handles and they will do this both simultaneously.</p> <p>Double-clicking between the engine handles will center them back to neutral position.</p> <p>Click-dragging the left mouse button on the bow thruster control left and right will activate the bow thrusters. This only works at very low boat speeds. Double-click at the bow thrusters throttle to set it back to neutral.</p>
Right	Click-dragging the right-mouse button to rotate the viewpoint around the ship. In bridge view, this way you can look in all directions. This also works with the binocular view.
Scroll wheel	<p>Zoom in and out of the ship. When you get close to the ship, you switch to bridge view. Zooming in even more and you get a binocular view.</p> <p>In binocular view, scrolling will zoom in and out.</p>

Mission objectives

There are different mission goals, or waypoints, that can be part of a mission.

1. **Area or Buoy** – You need to approach this waypoint at a certain distance indicated with a green circle, to get it marked as Reached.
2. **Mooring, towing, anchoring** – You need to get very close to a mooring waypoint with your ship, and stop the ship. Then moor the ship as explained above. Similar with towing and anchoring.
3. **Taxi** – At these waypoints, your ship needs to approach it very closely and stop completely (speed less than 2 knots) for at least several seconds, the time people would need to step in or out. After the stop time at low speed, this waypoint gets marked as Achieved and you can continue with the next.
4. **Rescue people** – Here you need to approach the person very slowly, without hitting them. When you hit the person, your mission will be stopped. Bring your ship very close to them at a speed of less than 2 knots and the person will disappear. You can continue your trip.
5. **Ramps** – With the speedboat and the water taxi, it is possible to jump in the air across a ramp. These are counted as completed if you jump straight over them.

Options

There are a number of ways in which you can fine-tune the game to your preference and to your

system performance. These are described in the following sections.

Graphic settings

In image 23, the dialog box is given which is used for setting the graphical features which influence the quality and performance.

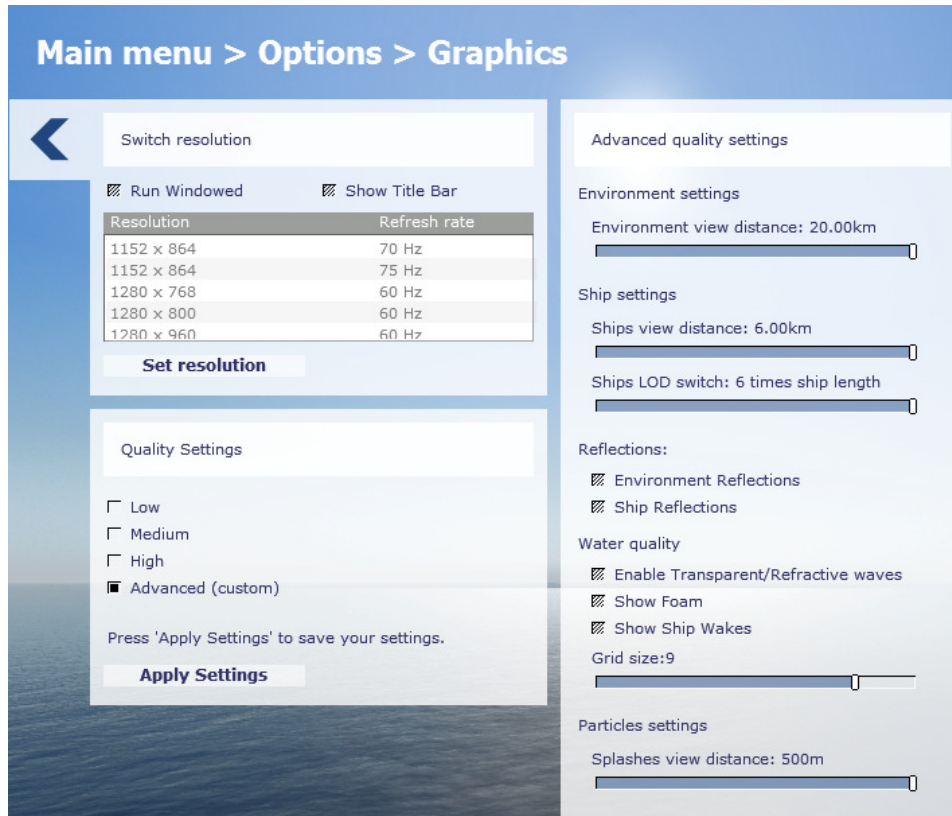


Image 23. Options for fine-tuning the graphics quality and performance.

The Resolution listing should give the available options for your graphics card. The default is 1024x768 pixels, which should be sufficient to play the game.

By default, the game runs full screen. But you can run it in windowed mode, which makes it easier to switch to other programs without closing the game.

There are three basic quality settings. If your PC specification is good enough for this game, the Low quality setting should be usable. The Advanced options allows you to fine-tune some settings to your taste. Most of these are self-explanatory. The bottom two options need some explanation.

Grid size – This is an indication of the quality of the ocean. The higher the grid size, the better the ocean quality, but the lower the performance.

Particles settings – This is used for the viewing distance of the bow waves of ships. The higher the viewing distance, the better the ocean quality, but the lower the performance.

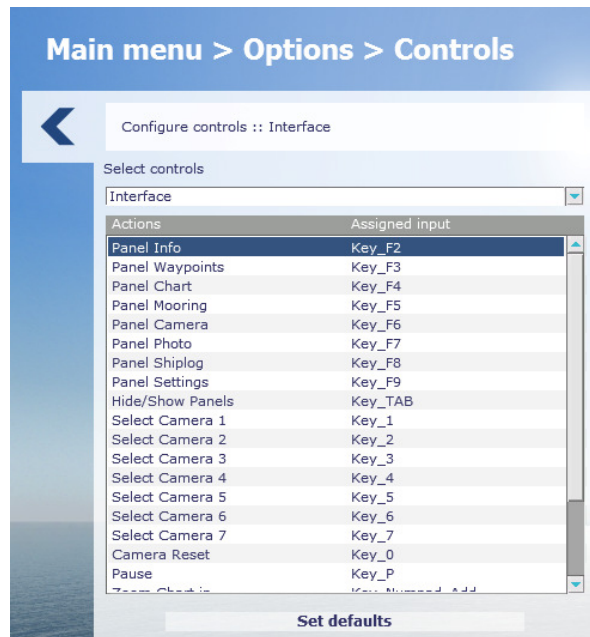
You can use a separate software program like Fraps (www.fraps.com) to assess the performance, indicated with framerate. Fraps will show the framerate in the corner of the screen. For missions with fast boats, like the powerboat, you need a framerate of at least 20 – 25. If you like these missions most, you may need to turn the graphics quality settings down. For larger ships, a framerate of 13 – 15 may be enough.

Controls

Ship Simulator 2008 has extensive functionality to customize the input controls in the game. Keyboard keys and joystick keys and sliders can be assigned to all the functions in the game. Image 24 shows

and describes how this works.

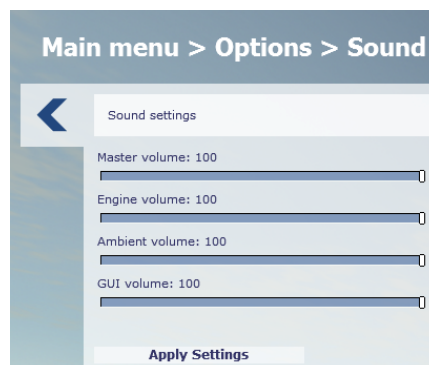
Image 24. Options to change the default controls. There are three sections, selectable with the drop-down list box at the top: Interface, Ship Controls and Crane Controls. Double-clicking on each item brings up a dialog box, which asks you to press the keyboard key or joystick button that you would like to assign to that function. With the Set defaults button at the bottom, you can always return to the original settings.



Sounds

Sound plays an important role in the game. There are four different categories of sound that can all be set separately from each other. See image 25 for more on this.

Image 25. Options to change the sound volume of the game. There are four different categories of sound. Use the sliders to set the volume level. Click on Apply Settings when you are finished.



Troubleshooting

Operating system: Windows 2000, XP or Vista
 Processor: Pentium 4 2.4GHz or AMD equivalent
 Memory: 1GB (Windows XP) or 2GB (Vista)
 Graphics card: GeForce 5900 or ATI 9600 Pro / X600, 128MB memory
 Audio devices: Sound card
 Input controller: Mouse with scroll wheel
 Optional controllers: Joystick, Joypad or Steering wheel

There are general updates of the game available at the forum of www.shipsim.com.

Below some common questions and answers.

Q1: During loading, the game crashes.

*A1:*Crashes during loading the game are usually caused by a PC configuration which is not of the required minimum spec, or by outdated drivers for the PC graphics card, sound card, or motherboard. It can also be that the version of DirectX is too old. An easy way to find out about your PC specification and driver versions is to run a program that was installed on your PC by DirectX, called

dxdiag. This is how you can run dxdiag (abbreviated name for DirectX Diagnostics):

1. Click Start
2. Click Run
3. Type DXDIAG
4. Select OK or Run, the DirectX diagnostic tool should appear now.
5. Select the "Save all information..." button at the bottom.
6. A new dialog will open up; select the location where you want to save the information.
7. Inspect the dxdiag.txt file for your hardware configuration, driver version dates, and DirectX version. If you see older driver dates than 2006, you should probably look on the corresponding vendor's Website for a newer version. Download and install it on your PC.

Lastly, game crashes during loading can be a sound codec issue. Maybe one of your software de-installations took away a shared sound driver or other sound middleware component.

Try this codec pack:

<http://www.k-litecodecpack.com>

If you think your PC spec is above the minimum, your DirectX version is the latest, and your drivers are all up-to-date, you can send an e-mail to support@shipsim.com where you describe your problem clearly, and attach the dxdiag.txt file, and possibly some screenshots of your problem situation.

Q2: The game runs, but the performance is very poor.

A2: If your PC has the minimum recommended spec, the performance can be improved by tweaking the graphics parameters in the Settings. You can for example reduce the viewing distance, and un-tick the setting Environment reflections. You can also optimize the settings of your graphics card, in Windows Control Panel. Follow the instructions of the Owner's Manual of your graphics card.

Q3: Why should I register myself at the ShipSim.com forum with my license key?

A3: Registering yourself with the license key will open up a few forum topics. New ships and environments, for example, are posted at these spots. It will also make it possible for you to upload your scores, so you can compare your mission scores with those of other players. Lastly, update patches are available at the forum of shipsim.com.

Technical support

If you encounter a software problem when installing or playing the game and the particular quandary could not be found in this manual, or solved by updating your computer with the latest audio or video drivers, you may contact our helpdesk.

Before sending any emails to our helpdesk, we strongly advise you to visit the forum of our website at forum.shipsim.com and browse to your particular forum.

In most cases, known issues, patches or updates are listed there. If your problem cannot be found in this manual or our website, then please send an email to support@shipsim.com

When contacting us, be sure to include:

- A brief description of the problem.
- The hardware configuration of your computer. Attach the dxdiag.txt file that results from running dxdiag (see section Troubleshooting for instructions).
- Information on the circumstances, under which the error occurred.
- A screenshot or video of the situation where the problem occurs. You can use a software program like Fraps (www.fraps.com) for this. The resulting videos should be made smaller

using for example Microsoft Media Encoder or DivX.

Epilepsy warning Notes

WARNING READ BEFORE USING YOUR VIDEO GAME SYSTEM READ THIS NOTICE BEFORE YOU OR YOUR CHILD PLAYS ANY COMPUTER GAME

A very small percentage of individuals have a condition which may cause them to experience epileptic seizures or have momentary loss of consciousness when viewing certain kinds of flashing lights or patterns that are commonly present in our daily environment. These persons may experience seizures while watching some kinds of television pictures or playing certain computer games. Players who have not had any previous seizures may nonetheless have an undetected epileptic condition. If you or anyone in your family has experienced symptoms linked to an epileptic condition (e.g. a seizure or loss of awareness), immediately consult your physician before playing any computer games.

We recommend that parents observe their children while they play computer games. If you or your child experience any of the following symptoms: dizziness, altered vision, eye or muscle twitching, involuntary movements, loss of awareness, disorientation, or convulsions, discontinue immediately and consult your physician before resuming play.

FOLLOW THESE PRECAUTIONS WHENEVER USING COMPUTER GAMES

- When playing computer games, do not sit or stand too close to the monitor. Play as far back from the screen as possible.
- Play computer games on the smallest available monitor.
- Do not play if you are tired or need sleep.
- Always play in a well-lit room.
- Be sure to take a 10 to 15 minute break every hour while playing.

REPETITIVE STRAIN WARNING

Some people may experience fatigue or discomfort after playing for a long time. Regardless of how you feel, you should ALWAYS take a 10 to 15 minute break every hour while playing. If your hands or arms become tired or uncomfortable while playing, stop and rest. If you continue to experience soreness or discomfort during or after play, listen to the signals your body is giving you. Stop playing and consult a doctor. Failure to do so could result in long term injury. If your hands, wrist or arms have been injured or strained in other activities, use of your system could aggravate the condition. Before playing, consult a doctor.

License Agreements

LIMITED SOFTWARE AND WARRANTY LICENSE AGREEMENT

SHIP SIMULATOR 2008

IMPORTANT - READ CAREFULLY: THE ACCOMPANYING PROGRAM (WHICH INCLUDES COMPUTER SOFTWARE PROGRAM, THE MEDIA AND RELATED DOCUMENTATION IN PRINTED OR ELECTRONIC FORM) IS LICENSED TO YOU ON THE TERMS SET FORTH BELOW, WHICH CONSTITUTES A LEGAL AGREEMENT BETWEEN YOU AND VSTEP BV ("Owner"). BY OPENING THIS PACKAGE, AND/OR INSTALLING OR OTHERWISE USING THE PROGRAM, YOU AGREE TO BE LEGALLY BOUND BY THE TERMS OF THIS AGREEMENT WITH Owner. IF YOU DO NOT AGREE TO THE TERMS OF THIS AGREEMENT, OR YOU ARE NOT AUTHORIZED TO USE THE PROGRAM YOU SHOULD RETURN THE PROGRAM TO THE VENDOR FROM WHICH YOU OBTAINED THE PROGRAM AND REQUEST A REFUND.

This program is protected by the copyright laws of The Netherlands, international copyright treaties and conventions and other laws. The Program is licensed, and not sold, and this Agreement confers no title or ownership to the Program or any copy thereof.

1. Limited Use License. Owner grants you the non-exclusive, non-transferable, limited right and

license to use one copy of the Program solely for your personal use on a single computer.

2. Ownership. All intellectual property rights in and to the Program (including but not limited to video, audio and other content incorporated therein) and title to any and all copies thereof are owned by Owner or its licensors, and you receive no right or interest therein other than the limited license in paragraph 1 hereof.

YOU SHALL NOT:

- Copy the Program except a single backup copy.
- Sell, rent, lease, license, distribute or otherwise transfer or make available to any other person the Program, in whole or in part, or use the Program or any part thereof in any commercial context, including but not limited in a service bureau, "cyber or Internet cafe", computer gaming center or any other commercial location in which multiple users may access the Program. Owner may offer a separate Site License Agreement to permit you to make the Program available for commercial use; see the contact information below.
- Reverse engineer, derive source code, modify, decompile, disassemble, or create derivative works of the Program, in whole or in part.
- Remove, disable or circumvent any proprietary notices or labels contained on or within the Program.
- Export or re-export the Program or any copy or adaptation in violation of any applicable export restrictions or other laws or regulations.

LIMITED WARRANTY. Publisher warrants to the original consumer licensor of the Program that the recording medium on which the Program is recorded will be free from defects in material and workmanship for 90 days from the date of purchase. If the recording medium of a product is found defective within 90 days of original purchase, Publisher agrees to replace, free of charge, such product within such period upon its receipt of the Product, postage paid, with proof of the date of purchase, as long as the Program is still being manufactured by Owner. In the event that the Program is no longer available, Publisher retains the right to substitute a similar program of equal or greater value. This warranty is limited to the recording medium containing the Program as originally provided by Publisher and is not applicable and shall be void if the defect has arisen through abuse, mistreatment, or neglect. Any implied warranties prescribed by statute are expressly limited to the 90-day period described above.

EXCEPT AS SET FORTH ABOVE, THIS WARRANTY IS IN LIEU OF ALL OTHER WARRANTIES, WHETHER ORAL OR WRITTEN, EXPRESS OR IMPLIED, INCLUDING ANY WARRANTY OF MERCHANTABILITY, SATISFACTORY QUALITY, FITNESS FOR A PARTICULAR PURPOSE OR NON-INFRINGEMENT, AND NO OTHER REPRESENTATIONS OR CLAIMS OF ANY KIND SHALL BE BINDING ON OR OBLIGATE Owner.

When returning the Program for warranty replacement please send the original product disk only in protective packaging and include: (1) a photocopy of your dated sales receipt; (2) your name and return address typed or clearly printed; (3) a brief note describing the defect, the problem(s) you encountered and the system on which you are running the Program.

LIMITATION ON DAMAGES.

IN NO EVENT WILL Owner BE LIABLE FOR SPECIAL, INCIDENTAL OR CONSEQUENTIAL DAMAGES RESULTING FROM POSSESSION, USE OR MALFUNCTION OF THE PROGRAM, INCLUDING DAMAGES TO PROPERTY, LOSS OF GOODWILL, COMPUTER FAILURE OR MALFUNCTION AND, TO THE EXTENT PERMITTED BY LAW, DAMAGES FOR PERSONAL INJURIES, EVEN IF Owner HAS BEEN ADVISED OF THE POSSIBILITY OF SUCH DAMAGES. Owner LIABILITY SHALL NOT EXCEED THE ACTUAL PRICE PAID FOR THE LICENSE TO USE THIS PROGRAM. SOME STATES/COUNTRIES DO NOT ALLOW LIMITATIONS ON HOW LONG AN IMPLIED WARRANTY LASTS AND/OR THE EXCLUSION OR LIMITATION OF INCIDENTAL OR CONSEQUENTIAL DAMAGES, SO THE ABOVE LIMITATIONS AND/OR EXCLUSION OR LIMITATION OF LIABILITY MAY NOT APPLY TO YOU. THIS WARRANTY GIVES YOU SPECIFIC LEGAL RIGHTS, AND YOU MAY HAVE OTHER RIGHTS WHICH VARY FROM JURISDICTION TO JURISDICTION.

TERMINATION. Without prejudice to any other rights of Owner, this Agreement will terminate

automatically if you fail to comply with its terms and conditions. In such event, you must destroy all copies of the Program and all of its component parts.

INJUNCTION. Because Owner would be irreparably damaged if the terms of this Agreement were not specifically enforced, you agree that Owner shall be entitled, without bond, other security or proof of damages, to appropriate equitable remedies with respect to breaches of this Agreement, in addition to such other remedies as Owner may otherwise have under applicable laws.

INDEMNITY. You agree to indemnify, defend and hold Owner, its partners, publishers, distributors, affiliates, contractors, officers, directors, employees and agents harmless from all damages, losses and expenses arising directly or indirectly from your acts and omissions to act in using the Program pursuant to the terms of this Agreement.

MISCELLANEOUS. For authorized use of software You must possess a rightfully obtained License Key. Except as expressly authorized by this Agreement, You shall not make available the Software, Accompanying materials, or any License Key to any third party. You will use your best efforts to cooperate with and assist the Owner in identifying and preventing any unauthorized use, copying, or disclosure of the Software, Accompanying materials, or any portion thereof.

This software is for entertainment purposes only. The software must not be used as a training tool.

Use of this software or any part of it to transfer data to other third party software is prohibited without the written permission of Owner.

The Owner maintains the right to block or otherwise disable License Keys if they are considered to be distributed over the Internet or otherwise obtained illegally.

The system requirements for this game are based on version 1.0 of the game. Installing patches may influence the minimum system requirements.

The Owner may drop support for a problem, when the problem has been fixed in a patch.

This Agreement represents the complete agreement concerning this license between the parties and supersedes all prior agreements and representations between them. It may be amended only by a writing executed by both parties. If any provision of this Agreement is held to be unenforceable for any reason, such provision shall be reformed only to the extent necessary to make it enforceable and the remaining provisions of this Agreement shall not be affected. This Agreement shall be governed by and construed in accordance with the laws of The Netherlands and you consent to the exclusive jurisdiction of the Dutch courts.

If you have any questions concerning this license agreement, you may contact us at:

VSTEP BV

The Netherlands

E-mail: info@shipsim.com

Please visit our website - www.shipsim.com

Credits

This Game is entirely a work of fiction. The names, characters, and incidents portrayed in it are the work of the developer's imaginations. Any resemblance to actual persons, living or dead, events, or localities is entirely coincidental. Ship Simulator 2008 and the Ship Simulator 2008 logo are trademarks of VSTEP. All Rights Reserved.

Microsoft and Windows XP are registered trademarks of Microsoft Corporation. All other trademarks and trade names are properties of their respective owners.

Programming

Martijn Proost (lead)
Jean-Paul Franssen (lead)
Morten Schönau Fog
Markus Hötzing
Marcin Sarnowicz
Ben Borrie
Guido Koolhaas
Mark Nolen

Junior Programming

Rik de Leeuw
Sander Maassen van de Brink
Sander de Putter

3D Modeling, Texturing and Scene Creation

Ben Borrie (lead)
Jasper Vermaas (lead)
Gerben van der Heijden
Richard van Eck
Rob Hermans
Marc Reynaert

Titanic

Jason De Donno
with research support from:
Bruce Beveridge
Scott Andrews
Daniel Klistorner
and the
Titanic Research and Modeling Association

Mission Creation

Michael Brinkmann (alias Bottman)
Steffen Haubner
Jan de Haan
Sander de Putter
Pjotr van Schothorst

Project management

Pjotr van Schothorst
Sebastiaan Otten

Special Thanks to:

Act-3D / Quest3D
www.quest3d.com
Newton Game Dynamics
www.newtondynamics.com
KNRM
www.knrm.nl
Studio Yacht
www.studioyacht.nl
Fairmount Marine B.V.
www.fairmount.nl
P&O Ferries Holdings Ltd
www.poferries.com
Red Funnel Group Ltd
www.redfunnel.co.uk
Zeehaven Politie Rotterdam Rijnmond
(The Rotterdam-Rijnmond Seaport Police)
Port of Rotterdam
www.portofrotterdam.com
Ocean Rig
www.ocean-rig.com
Huibert Groenendijk
www.huibertgroenendijk.com
Act-3D - Quest3D
www.quest3d.com
Newton Game Dynamics
www.newtondynamics.com
Bionatics
www.bionatics.com
Newton for Quest (Simon Sadler)
Wout Boevé A.K.A. Wout
Carl Ferguson A.K.A. [RWP]DJM
David M. Anderson A.K.A. AriesDW

Online

Shipsim Website
www.shipsim.com
info@shipsim.com
VSTEP Website
www.vstep.nl
info@vstep.nl

