

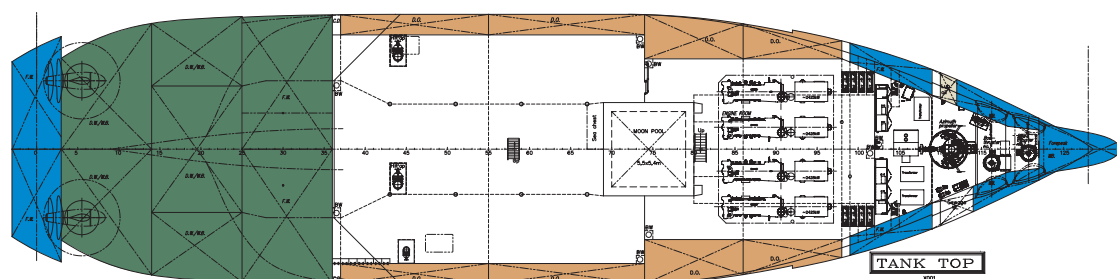
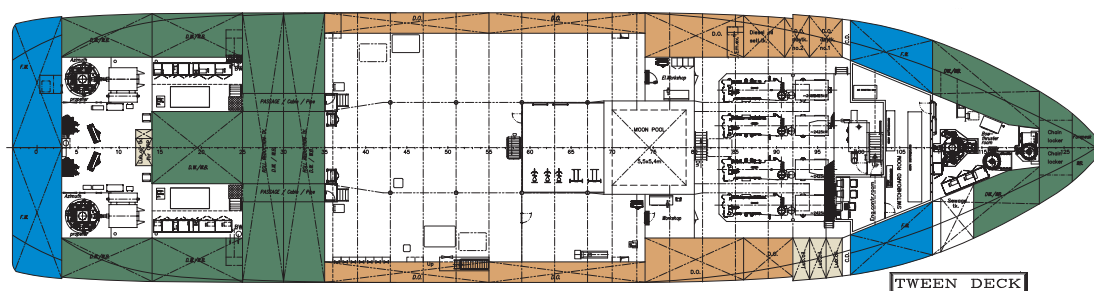
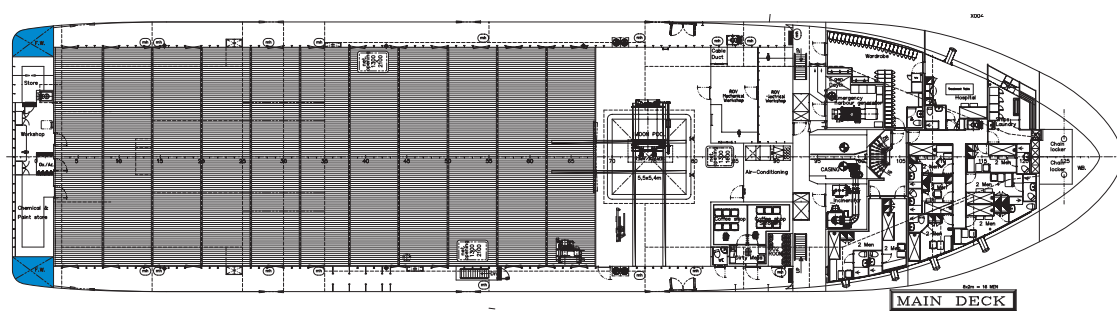
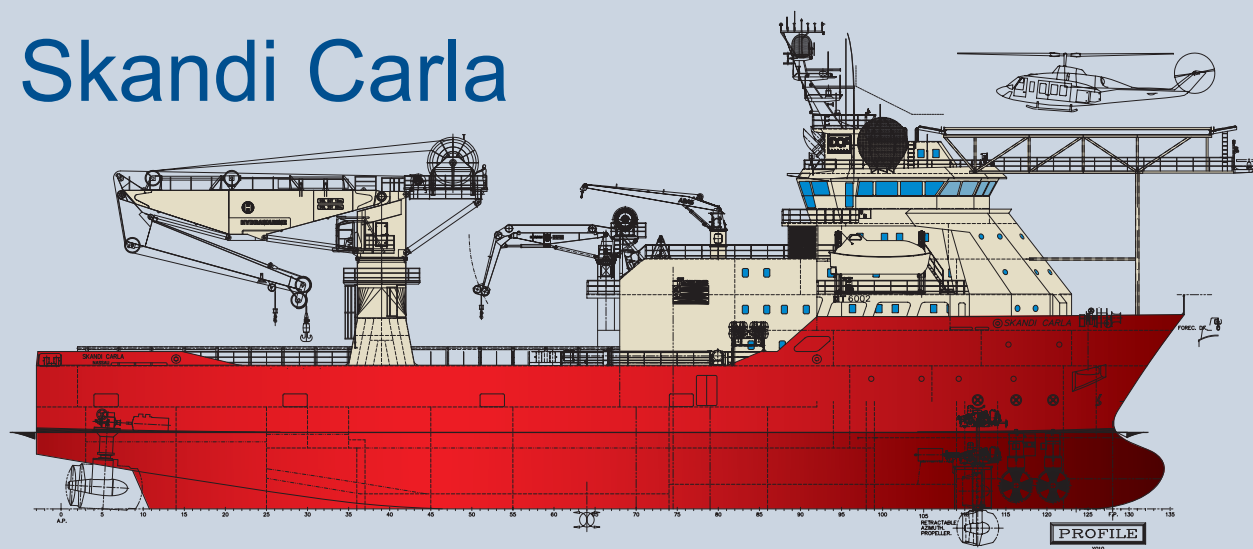


Design: MT 6002
Build: 2001
IMO No: 9239446

Skandi Carla



Skandi Carla



Tank capacities

			Cargo		
			Fuel Oil	Fresh water	Drill Water
Tank ID	Contents	Capacity (m³)	0,850	1,000	1,025
Forepeak Tk 1	DW/WB	135,7			139
DB/wing Tk 2 Port	DW/WB	95,1			97,4
DB/wing Tk 2 Stbd	DW/WB	74,2			76
DB/wing Tk 3 Port	FW	107,7		107,7	
DB/wing Tk 3 Stbd	FW	107,7		107,7	
DB/wing Tk 4 Port	FO	81,6	69,3		
DB Tk 4 Center	FO	100,6	85,5		
DB/wing Tk 4 Stbd	FO	108,4	92,1		
DB/wing Tk 5 Port	FO	184	156,4		
DB/wing Tk 5 Stbd	FO	191	162,3		
Wing Tk 6 Port	FO	181,7	154,4		
DB Tk 6 Center	DW/WB	55,1			56,4
Wing Tk 6 Stbd	FO	183,8	156,2		
DB/wing Tk 7 Port	FO	166,9	141,8		
DB Tk 7 Center	DW/WB	80,7			82,7
DB/wing Tk 7 Stbd	FO	169,4	143,9		
Wing Tk 8 Port	FW	218,4		218,4	
Wing Tk 8 Stbd	FW	218,4		218,4	
DB/wing Tk 9 Port	DW/WB	116,6			119,5
DB Tk 9 Center	DW/WB	287,8			294,9
DB/wing Tk 9 Stbd	DW/WB	116,6			119,5
DB/wing Tk 10 Port	DW/WB	121,6			124,6
DB/wing Tk 10 Stbd	DW/WB	121,6			124,6
DB/wing Tk 11 Port	FW	97,7		97,7	
DB/wing Tk 11 Stbd	FW	101,4		101,4	
Roll Reduction Tk 21	DW/WB	73,4			75,2
Roll Reduction Tk 22	DW/WB	159,1			163
Roll Reduction Tk 23	DW/WB	158,7			162,6
TOTAL WEIGHTS			1162	851	1635
TOTAL CAPACITY(m³)			1367	851	1596
TOTAL CAPACITY(Cu.ft.)			48273	30063	56345

Ship service tanks

Contents	Capacity (m³)
Bilgewater	12,5
Fuel oil service tanks	80,8
Luboil	35,0
Sewage	25,5
Sludge	12,5

All figures are based on a 100% tank volume
Densities are estimated values and actual cargo densities may alter the above carrying capacities

Technical data

Skandi Carla

GENERAL

Design	MT 6002
Built by / Year	Aukra Industrier AS Y.No102 / 2001
Flag	Bahamas
Port of Registry	Nassau
Classification	+ 1A1, SF, HELDK, E0, DYNPOS-AUTR, CLEAN, DK(+)

MAIN PARTICULARS

LOA	83,85 m
LBP	76,80 m
Bredth Moulded	19,70 m
Depth Main Deck	7,45 m
Max draft	6,10 m
DWT	4400 t
GRT	4456 GT
Net Tonnage	1336 NT

DECK CAPACITIES

Cargo deck, free area	39,8 m x 16,0 m (634 m ²)
Max deck load	5,0 t/m ²
Deck Cargo	N/A
Cargo Rail	0.00 m

DISCHARGE CAPACITIES

Fuel Oil	2 x 250 m ³ /h-9bar
Fresh Water	2 x 150 m ³ /h-9bar
Ballast/Drillwater	2 x 250 m ³ /h-9bar

DECK EQUIPMENT

Windlass/Mooring winch	2 x Aquamaster, MW 100E/AW 48 K3 2 x Aquamaster 8 T, MW80E aft. Aquamaster 10 T, MW 100 E Hydramarine AS: Offshore Knuckle Jib crane 50t, HMC 3447 Heave compensated Dynamic factor 2.0, Duty factor 1.2 1 x 50 Tons/15 m or 25T/30 m. Wire capacity 3000 m. Ø 56 mm. Whip line 540m 10T/29.5 m Offshore knuckle jib crane 10t, HMC 1400 Dynamic factor 2.0, Duty factor 1.2 1 x 5,0 T/10 m. Or 10 T/5 m, Wire capacity 1015 m Ø 28mm Provision Crane, ABAS HDE 30-EH-3T/10m ROV Hangar Crane, EFFER 150-4S 950kg/12m or 6,2T/2m Skid System for module handling inside ROV Hangar.
Tugger Winch	Fuel
Deck cranes	Compressed Air Electrical Power 2 x 250 kVA, 3/440V/60Hz 2 x 500 kVA, 3/690V/60Hz
Deck Outlets for Aux. Equipment	

Technical data

Skandi Carla

MACHINERY & PROPULSION

Main Engines	4 x Caterpillar, type 3608 each 2 530 kW (BHP 13763)
Main Generators	4 x ABB generators each 2 425 kW
Diesel-electric propulsion system	
Thrusters Fwd	2 x Tunnel thrusters TT 2 200 Kamewa, 1 000 kW, el.driven.
Thrusters Aft:	1 x Retractable thruster Aquamaster UL1 401 FP, 1 000 kW, el. driven. 2 x Aquamaster Contaz 15, Ø 3200 mm (Duoprop) 2 x 2 200 kW Frequency controlled el. drivers.
Harbour / Emergency	1 off Caterpillar 3408 C, with Caterpillar generator – 462 kVA

NAVIGATION AND COMMUNICATION EQUIPMENT

Radars	1 off Furuno 2835 S Arpa - S 1 off Furuno 2825 Arpa - X
Gyrocompass	Anschutz ST 20
Satellite Navigator	1 x LEIKA MK 10
Speed Log	1 x JRC JLN 203, Doppler
Echo Sounder	1 x Skipper GDS 101
Wind sensors	2 x Kongsberg Ultrasonic
GMDSS A3 Radio Station	
Radio telephones	Skanti TRP 1 501 Class II
Inmarsat C	2 x Satcom Skanti TT 3020 C
Inmarsat B	Skanti Class II
VHF	2 x Skanti 1100 DSC, duplex, 3 x Skanti 1000 P, simplex
UHF	3 x Motorola GP 900 EX

PERFORMANCE

Full speed	14 knots - 24 m³/day
Service speed	13 knots - 18 m³/day
Economical Speed	11 knots - 16 m³/day
Stand-by	5 m³/day
DP Operation by rig	7 m³/day
In port	3.5 m³/day

ACCOMMODATION

Total Capacity	80 persons
Officer Cabins	6 x 1 bed
Crew Cabins	12 x 1 bed 8 x 2 beds
Client Cabins	14 x 1 bed 19 x 2 beds
Lounge	Three fully equipped lounges (one for smokers)
Gymnasium	One fully equipped gymnasium
2 Coffee shops (one for smokers)	
Cinema	
Conference room	
Sky lobby / helideck reception	

Technical data

Skandi Carla

CONTINGENCY EQUIPMENT

Life rafts:	8 x Viking D 625.(20persons)
Rescue/MOB Boat:	1 x Springer MP - 741
Rescue boat davit:	1 x Hydramarine type HMD A32
Safety equipment:	According to SOLAS/NMD
Lifeboats	2 x Chest Harding, type MCB 24 (40 persons)
Survival suites	80 pc.

DP / AUTOMATION PLANT

Dynpos AUTR	Kongsberg Simrad SDP 21 ERN no: 99.98.90 Minimum.
Reference Systems	DPS700/1xDPF102/1xDPF200 (2 DGPS Systems) 1 x SEAPATH 200RTK (DGPS System) 1 x Hipap 500 (HPR system) 1 x Hipap 500 L (HPR system)
Interface installed for:	1 x Artemis 1 x Fanbeam 1 x Tautwire
Integrated Vessel Control System	ABB Advant
Power management	ABB IAS.
Thruster Control	Kongsberg Simrad SJF-OT (independent system) Kamewa control system

HELIDECK

Supplier	Hydro Marine Aluminium
Size	19.5 x 19.5 m
Aircraft type	Super Puma AS 332 L2
Max Land Load	9.350Kgs
Classification	DnV, Uk-CAA Cap 437 rules

LAUNCH AND RECOVERY SYSTEM

Odim Design ROV/TMS Launch and recovery system	
Tandem cursor design w/Locking Mechanism.	
Heave compensated	
Winch is designed for tension control system; capacity is 4 meter wave height at a period of 7 sec, max speed 1,8 m/s	
Lifting Winch capacity	3600meter Ø45.5mm.
Umbilical mounted	3000 meter
Pull force inner/outer layer	225kN/135kN
Brake force inner/outer layer	285kN/185kN
Speed Pulling Normal	47-75 meter/min
Speed Comp. Mode	108-172 meter/min
Technical description ref. to Odim documentation: User Manual, UAG488, UAG494, UAD375, UAI531	

ROV FACILITIES

1 off Mezzanine deck	4 positions 70m ² , 5t/m ²
1 x Moonpool 5,5 x 5,4 m	
1 x Hydraulic remote controlled	
Moonpool hatc.	
1 x ROV Workshop	
1 x EL- Workshop	
1 ROV office	
1 ROV Online room	
1 ROV Offline room	
2 Client Offices	